

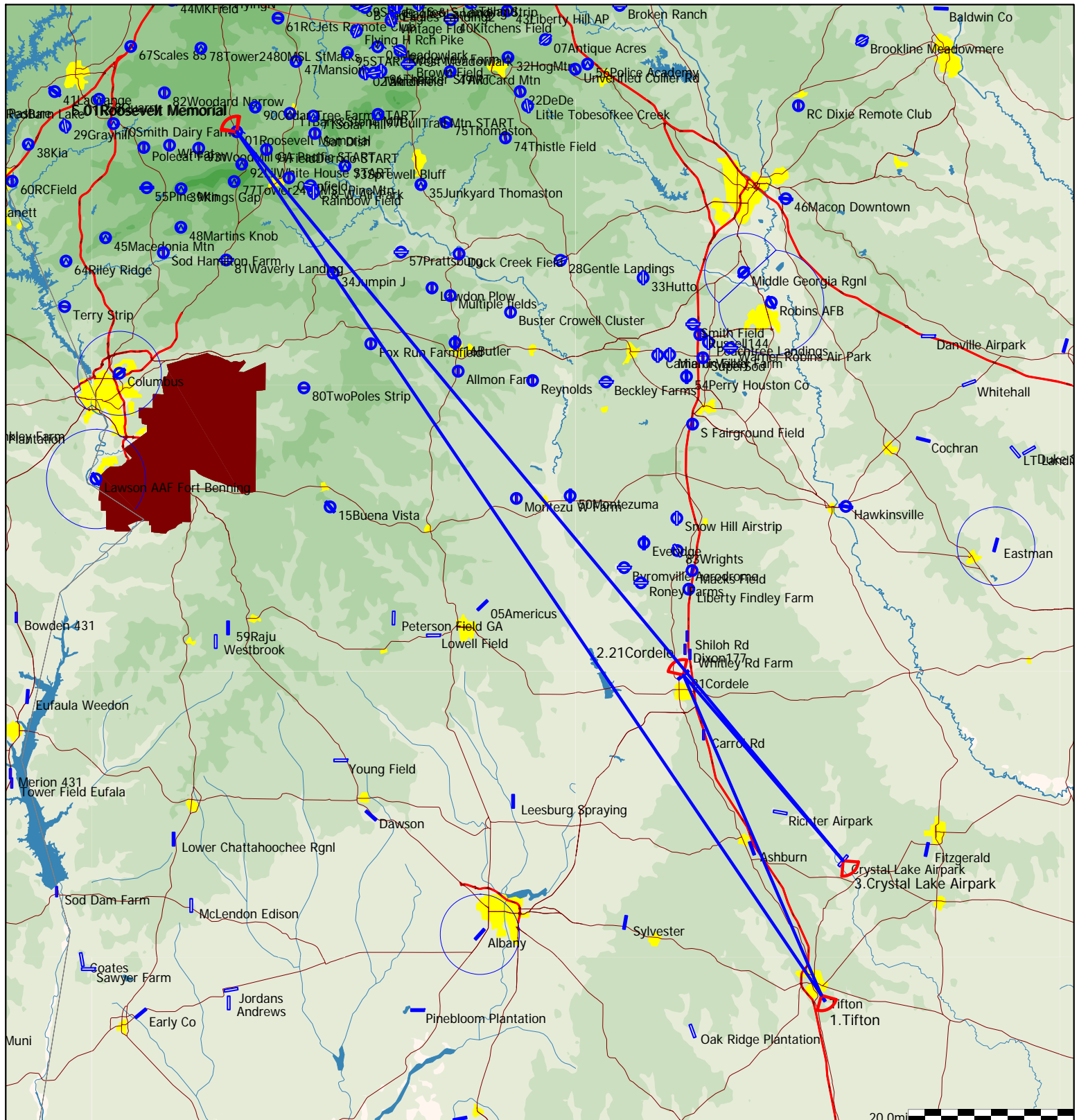
Type: Polygon with three points [502.Opts]

Warm Springs 500km 3 Turnpoint Tasks

Task distance: 311.9mi

2015-08-14

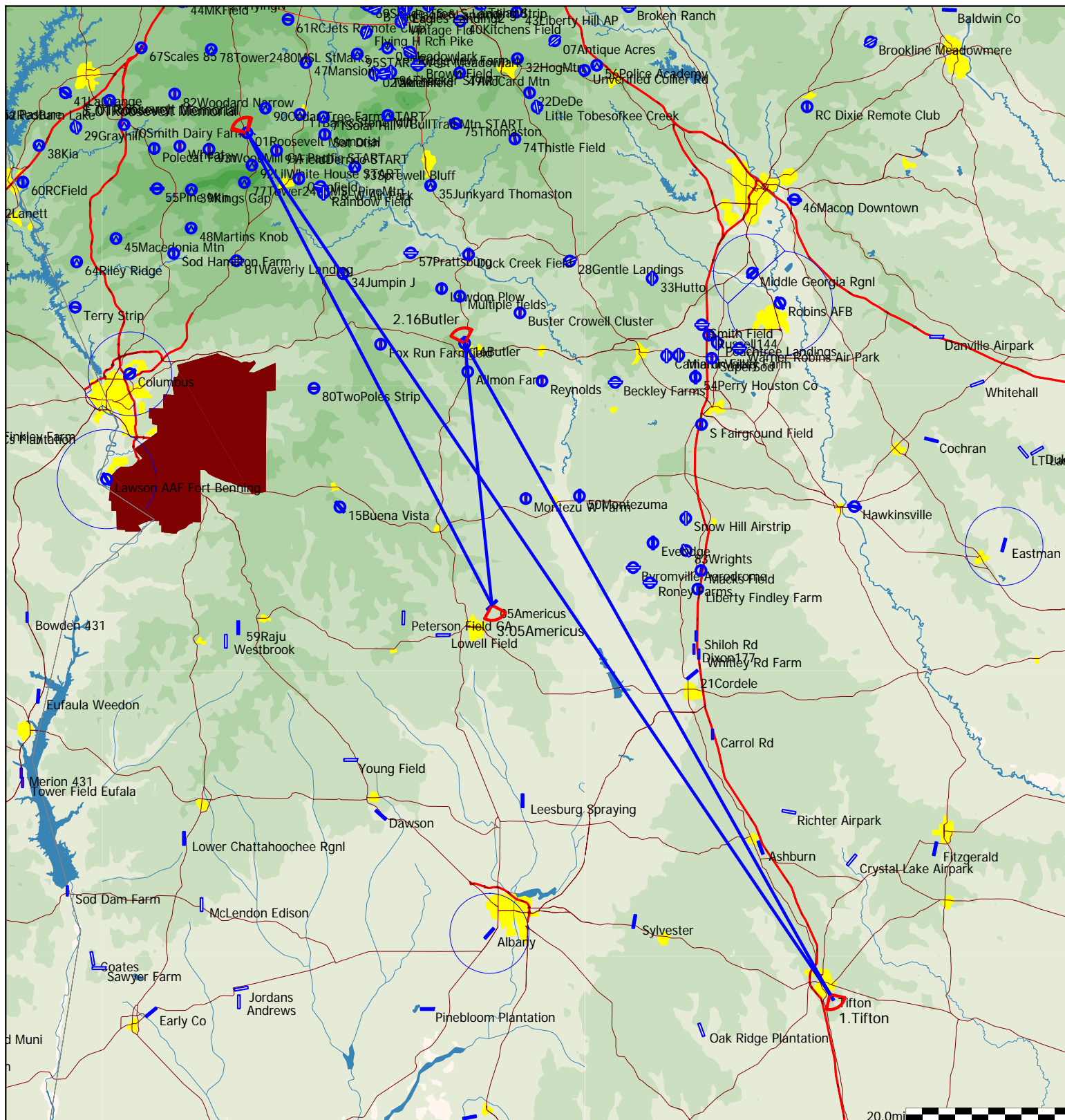
Style	Code	Points	Latitude	Longitude	Dis.	Crs.
Take off	01Rosevl	01Roosevelt Memorial	N32°56'19"	W084°41'47"		
Start	01Rosevl	01Roosevelt Memorial	N32°56'19"	W084°41'47"		
1.Point	Tifton	Tifton	N31°25'44"	W083°29'19"	125.8mi	145°
2.Point	21Cordel	21Cordele	N31°59'20"	W083°46'26"	42.1mi	337°
3.Point	CrystLk	Crystal Lake Airpark	N31°39'51"	W083°26'38"	29.6mi	139°
Finish	01Rosevl	01Roosevelt Memorial	N32°56'19"	W084°41'47"	114.4mi	320°
Landing	01Rosevl	01Roosevelt Memorial	N32°56'19"	W084°41'47"		



Type: Polygon with three points [502.4pts]

Task distance: 312.2mi

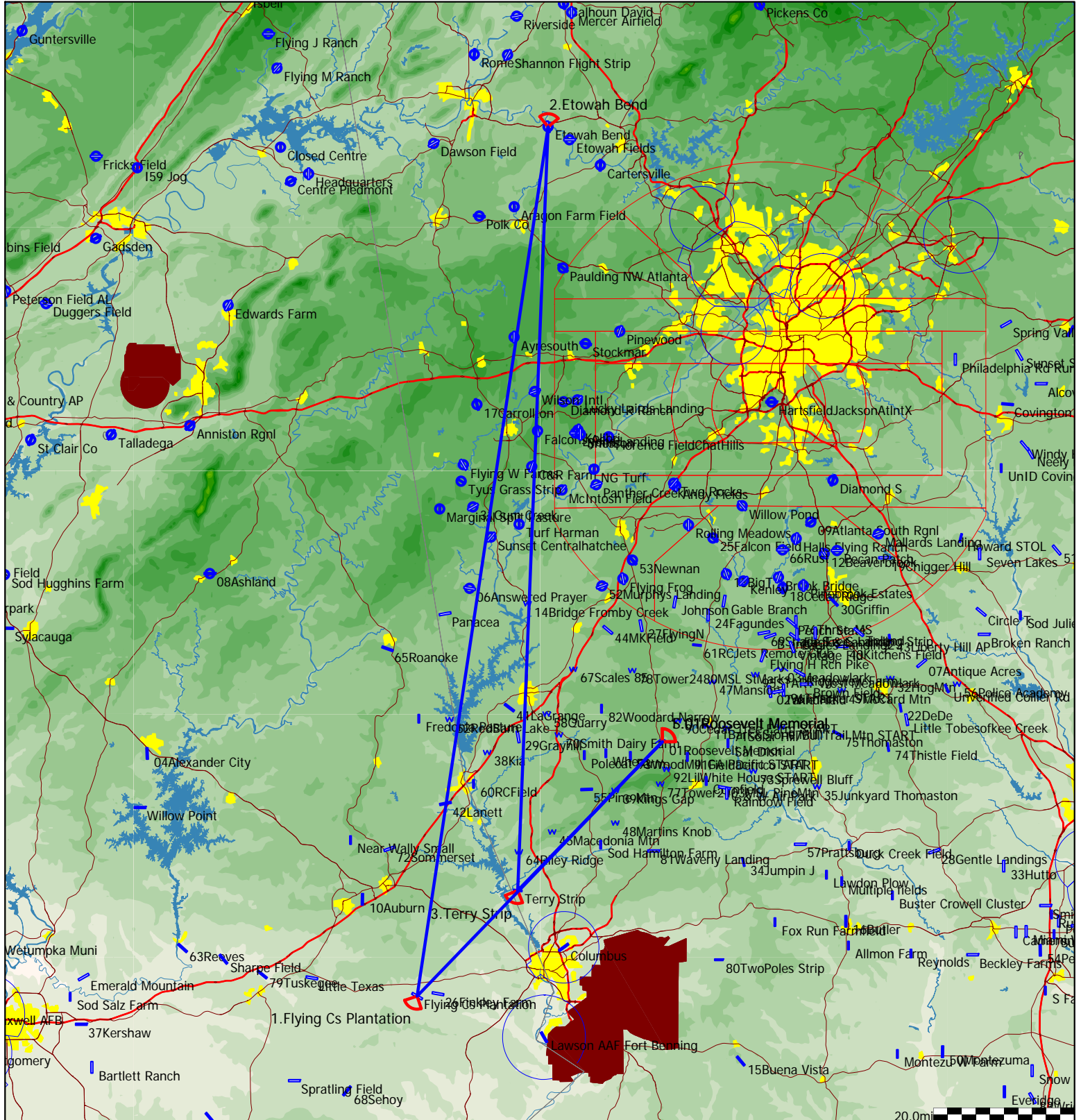
Style	Code	Points	Latitude	Longitude	Dis.	Crs.
Take off	01Rosevl	01Roosevelt Memorial	N32°56'19"	W084°41'47"		
Start	01Rosevl	01Roosevelt Memorial	N32°56'19"	W084°41'47"		
1.Point	Tifton	Tifton	N31°25'44"	W083°29'19"	125.8mi	145°
2.Point	16Butler	16Butler	N32°34'11"	W084°14'43"	90.3mi	331°
3.Point	05Amercs	05Americus	N32°06'39"	W084°11'20"	31.8mi	174°
Finish	01Rosevl	01Roosevelt Memorial	N32°56'19"	W084°41'47"	64.3mi	333°
Landing	01Rosevl	01Roosevelt Memorial	N32°56'19"	W084°41'47"		



Type: Polygon with three points [502.9pts]

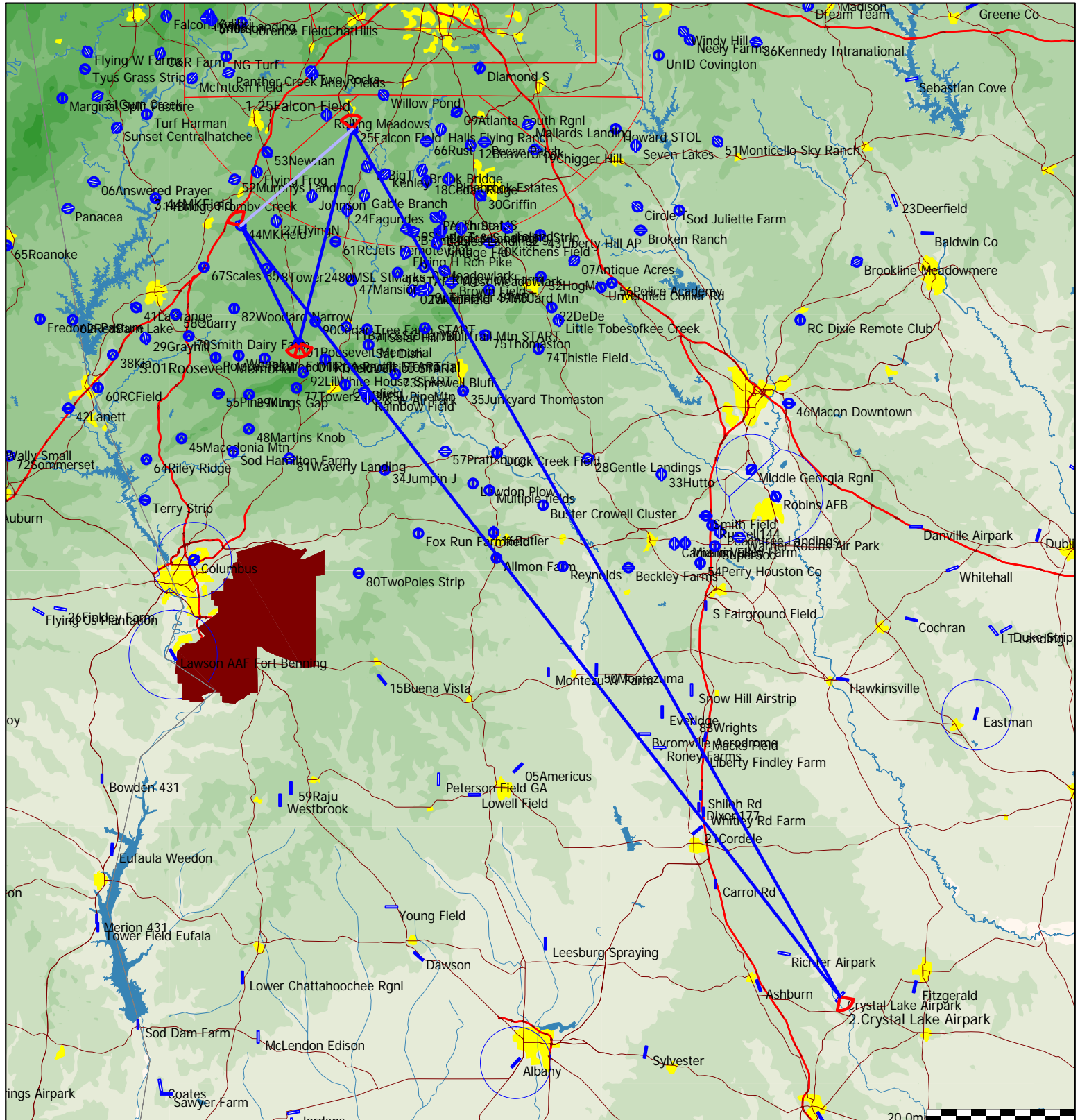
Task distance: 312.5mi

Style	Code	Points	Latitude	Longitude	Dis.	Crs.
Take off	01Rosevl	01Roosevelt Memorial	N32°56'19"	W084°41'47"		
Start	01Rosevl	01Roosevelt Memorial	N32°56'19"	W084°41'47"		
1.Point	FlyCsPln	Flying Cs Plantation	N32°24'58"	W085°17'57"	50.3mi	224°
2.Point	EtowhBnd	Etowah Bend	N34°12'07"	W084°58'38"	124.5mi	9°
3.Point	TERRY	Terry Strip	N32°37'59"	W085°03'07"	108.2mi	182°
Finish	01Rosevl	01Roosevelt Memorial	N32°56'19"	W084°41'47"	29.5mi	44°
Landing	01Rosevl	01Roosevelt Memorial	N32°56'19"	W084°41'47"		



Task distance: 312.9mi

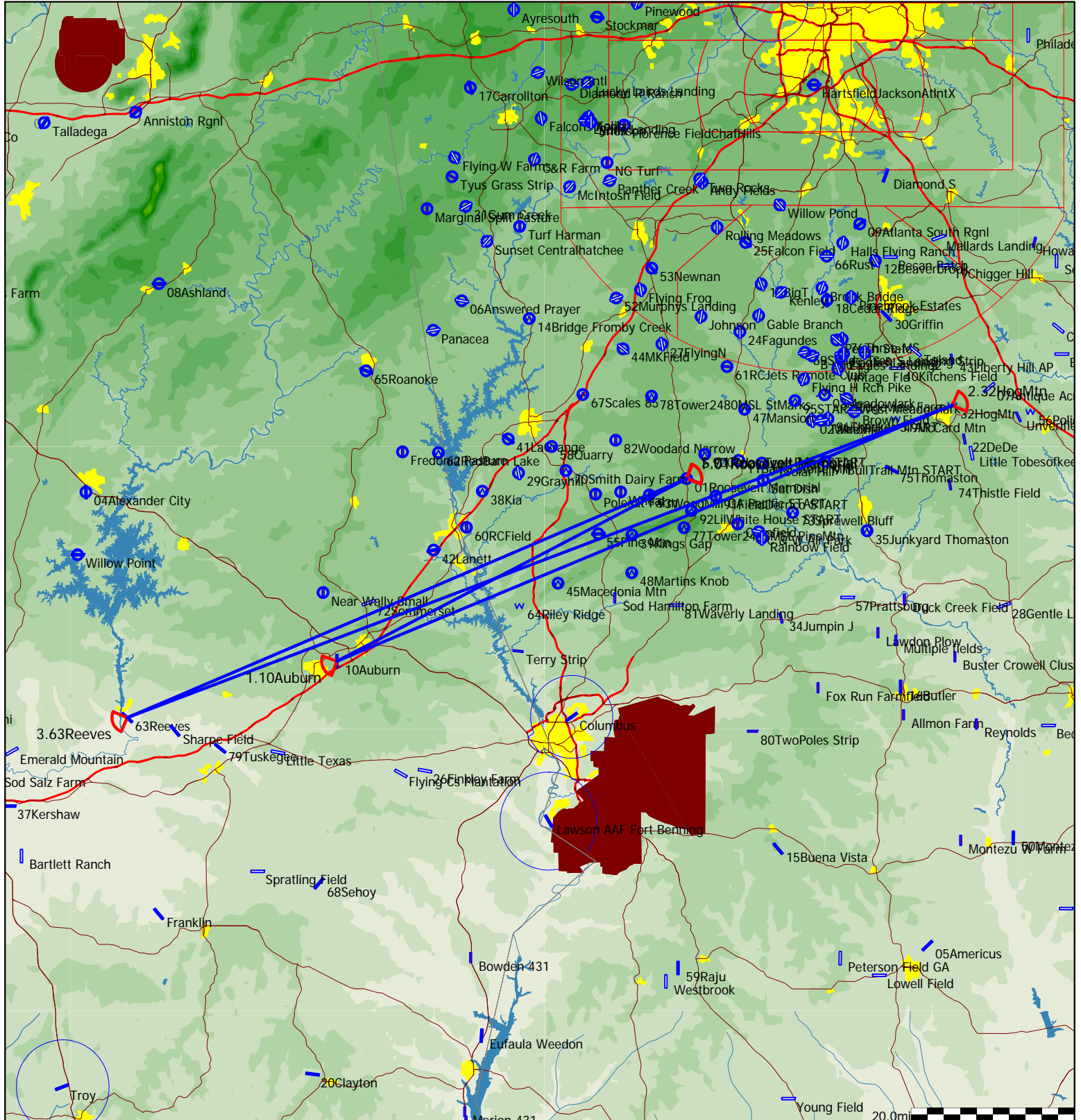
Style	Code	Points	Latitude	Longitude	Dis.	Crs.
Take off	01Rosevl	01Roosevelt Memorial	N32°56'19"	W084°41'47"		
Start	01Rosevl	01Roosevelt Memorial	N32°56'19"	W084°41'47"		
1.Point	25FalcnF	25Falcon Field	N33°21'26"	W084°34'19"	29.7mi	14°
2.Point	CrystLk	Crystal Lake Airpark	N31°39'51"	W083°26'38"	134.0mi	150°
3.Point	44MKFeld	44MKField	N33°10'07"	W084°49'49"	131.6mi	322°
Finish	01Rosevl	01Roosevelt Memorial	N32°56'19"	W084°41'47"	17.7mi	154°
Landing	01Rosevl	01Roosevelt Memorial	N32°56'19"	W084°41'47"		



Type: Polygon with three points [503.7pts]

Task distance: 313.0mi

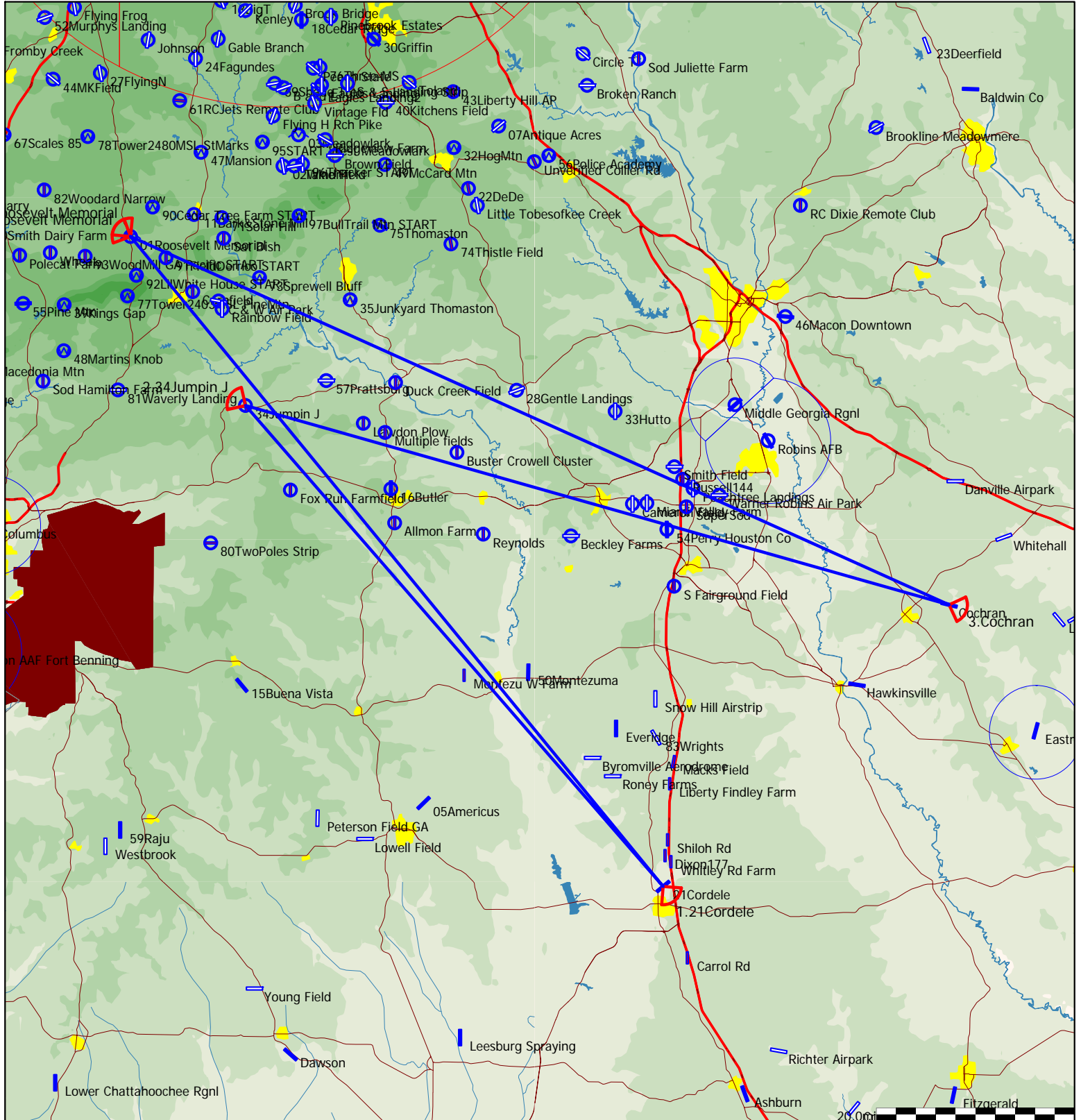
Style	Code	Points	Latitude	Longitude	Dis.	Crs.
Take off	01Rosevl	01Roosevelt Memorial	N32°56'19"	W084°41'47"		
Start	01Rosevl	01Roosevelt Memorial	N32°56'19"	W084°41'47"		
1.Point	10Auburn	10Auburn	N32°36'54"	W085°26'02"	48.4mi	243°
2.Point	32HogMtn	32HogMtn	N33°04'07"	W084°08'10"	81.7mi	67°
3.Point	62Reves	63Reeves	N32°30'54"	W085°52'34"	108.2mi	250°
Finish	01Rosevl	01Roosevelt Memorial	N32°56'19"	W084°41'47"	74.7mi	67°
Landing	01Rosevl	01Roosevelt Memorial	N32°56'19"	W084°41'47"		



Type: Polygon with three points [504.7pts]

Task distance: 313.6mi

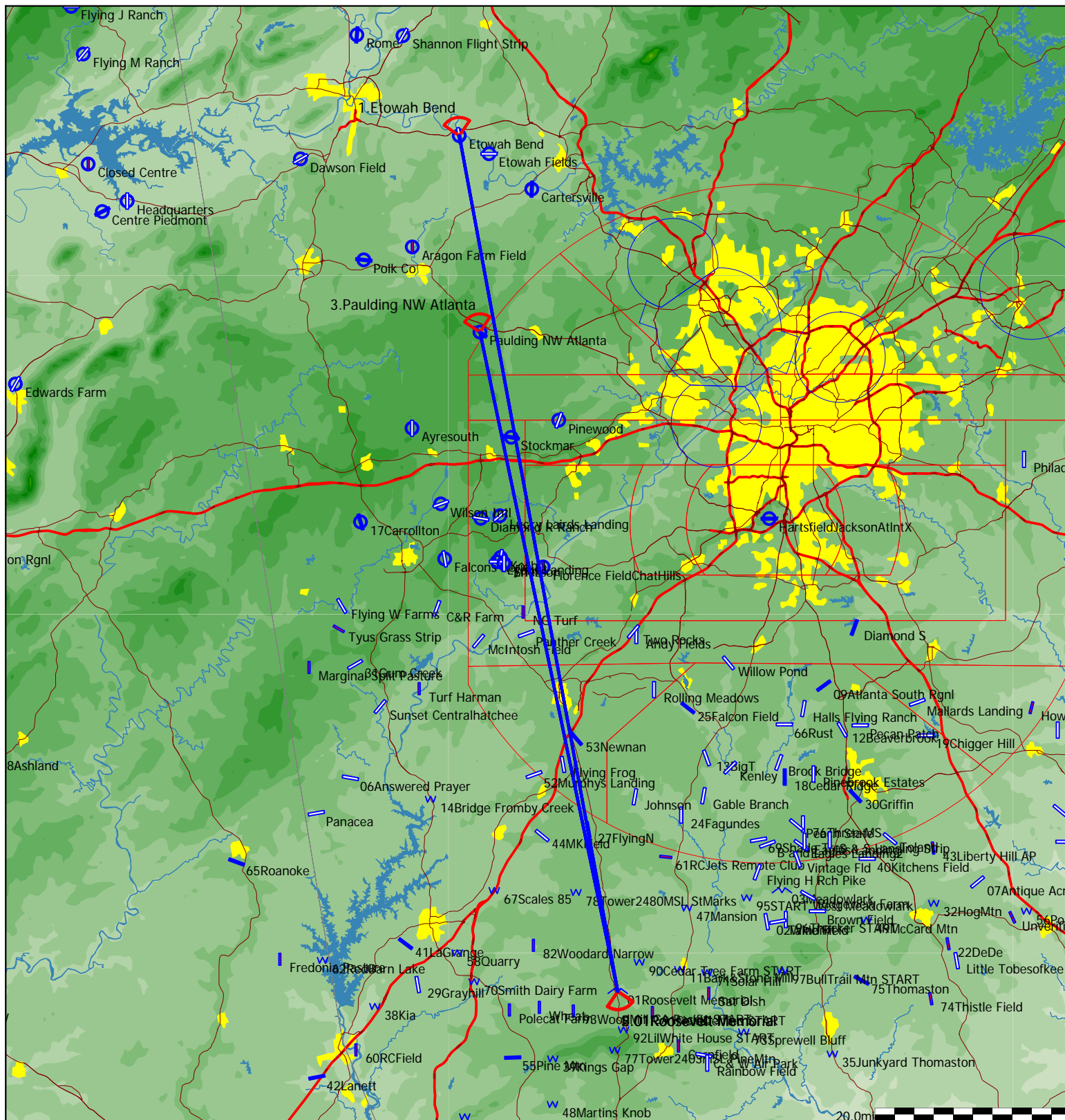
Style	Code	Points	Latitude	Longitude	Dis.	Crs.
Take off	01Rosevl	01Roosevelt Memorial	N32°56'19"	W084°41'47"		
Start	01Rosevl	01Roosevelt Memorial	N32°56'19"	W084°41'47"		
1.Point	21Cordel	21Cordele	N31°59'20"	W083°46'26"	84.8mi	140°
2.Point	34JumpnJ	34Jumpin J	N32°41'30"	W084°29'50"	64.3mi	319°
3.Point	Cochran	Cochran	N32°24'02"	W083°16'42"	73.9mi	105°
Finish	01Rosevl	01Roosevelt Memorial	N32°56'19"	W084°41'47"	90.6mi	295°
Landing	01Rosevl	01Roosevelt Memorial	N32°56'19"	W084°41'47"		



Type: Polygon with three points [505.7pts]

Task distance: 314.2mi

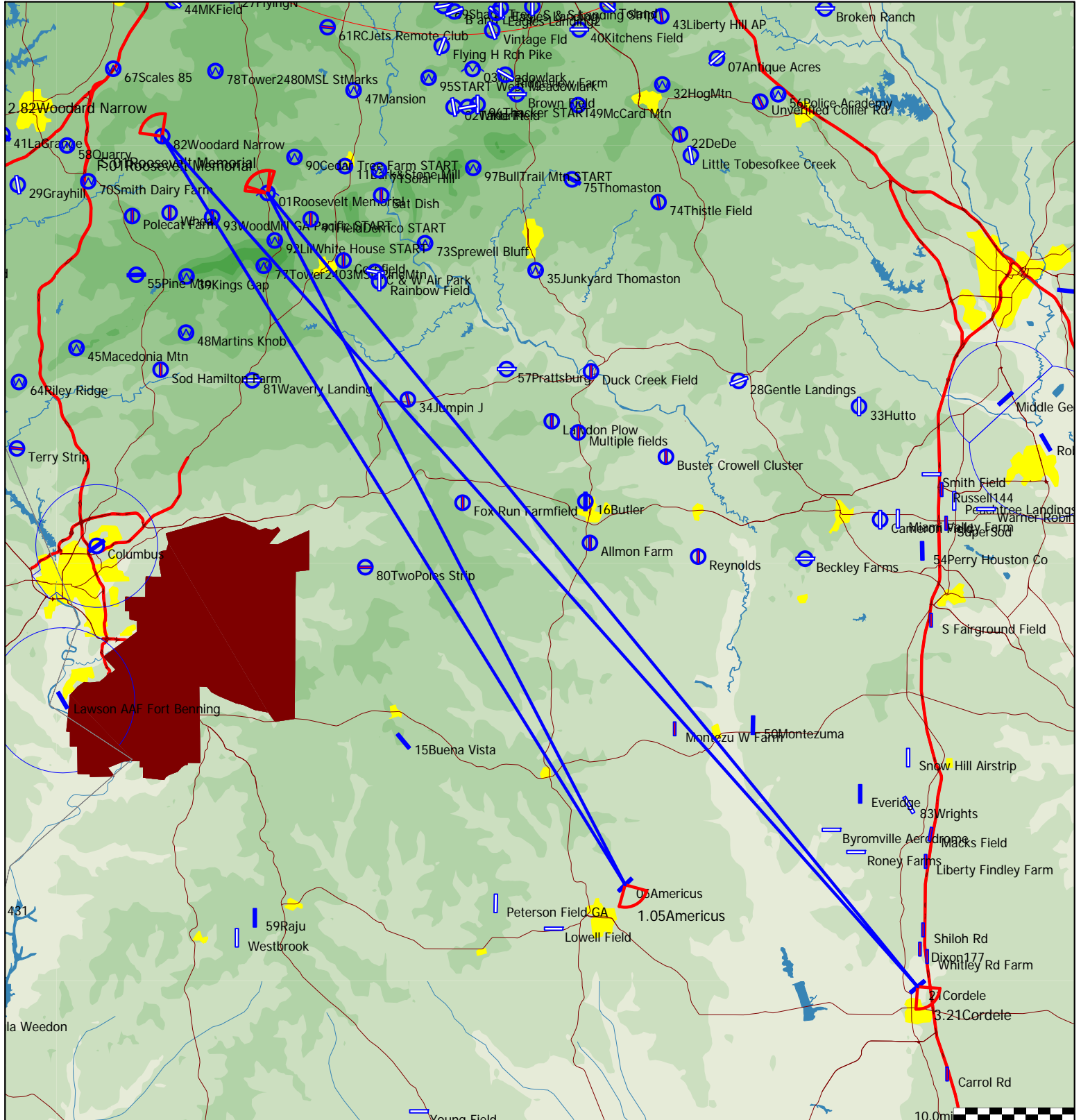
Style	Code	Points	Latitude	Longitude	Dis.	Crs.
Take off	01Rosevl	01Roosevelt Memorial	N32°56'19"	W084°41'47"		
Start	01Rosevl	01Roosevelt Memorial	N32°56'19"	W084°41'47"		
1.Point	EtowhBnd	Etowah Bend	N34°12'07"	W084°58'38"	88.6mi	350°
2.Point	01Rosevl	01Roosevelt Memorial	N32°56'19"	W084°41'47"	88.6mi	169°
3.Point	Paulding	Paulding NW Atlanta	N33°54'43"	W084°56'26"	68.5mi	348°
Finish	01Rosevl	01Roosevelt Memorial	N32°56'19"	W084°41'47"	68.5mi	168°
Landing	01Rosevl	01Roosevelt Memorial	N32°56'19"	W084°41'47"		



Type: Polygon with three points [508.1pts]

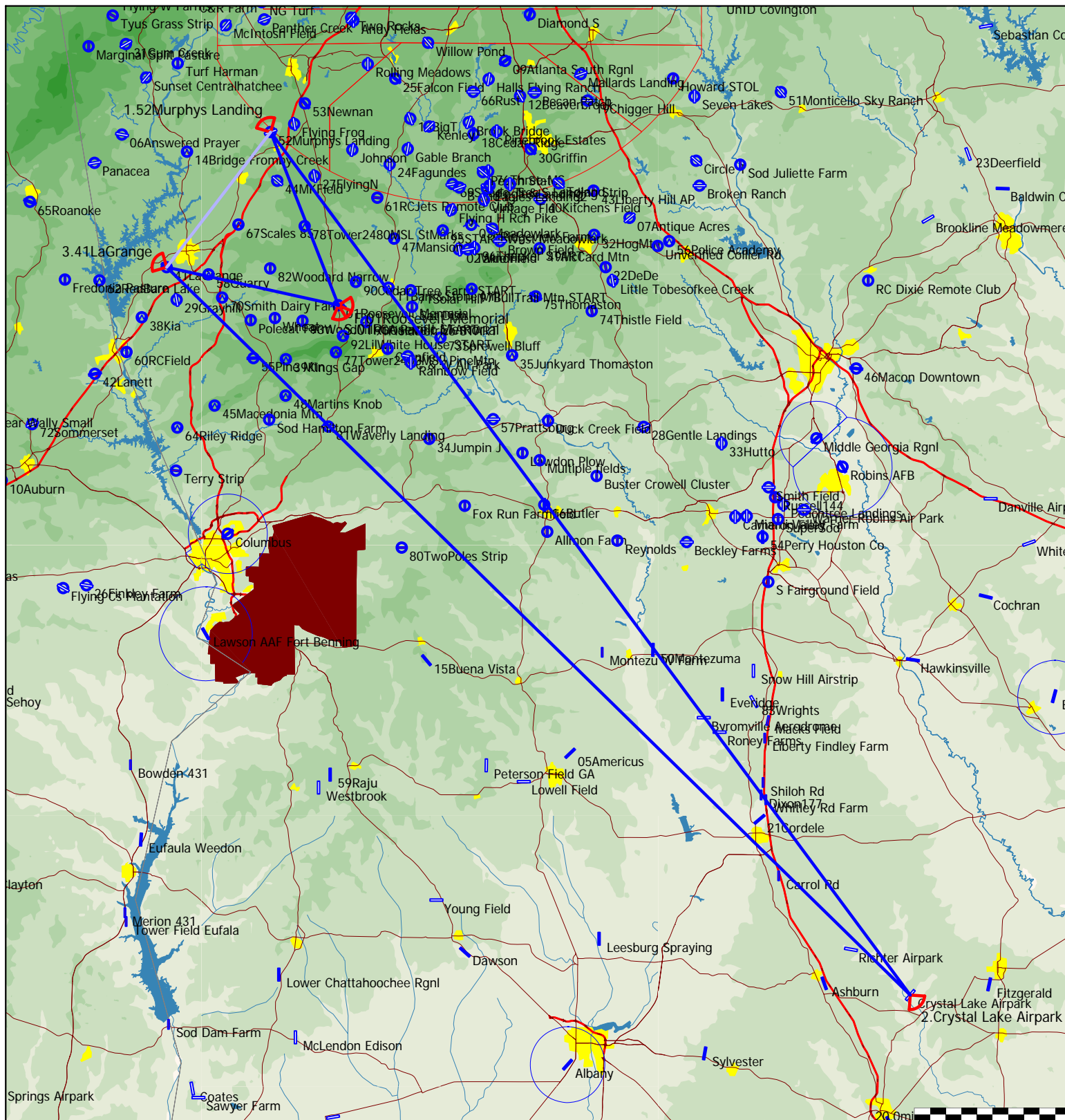
Task distance: 315.7mi

Style	Code	Points	Latitude	Longitude	Dis.	Crs.
Take off	01Rosevl	01Roosevelt Memorial	N32°56'19"	W084°41'47"		
Start	01Rosevl	01Roosevelt Memorial	N32°56'19"	W084°41'47"		
1.Point	05Amercscs	05Americus	N32°06'39"	W084°11'20"	64.3mi	152°
2.Point	82WodNar	82Woodard Narrow	N33°00'24"	W084°50'45"	72.7mi	328°
3.Point	21Cordel	21Cordele	N31°59'20"	W083°46'26"	94.0mi	138°
Finish	01Rosevl	01Roosevelt Memorial	N32°56'19"	W084°41'47"	84.8mi	321°
Landing	01Rosevl	01Roosevelt Memorial	N32°56'19"	W084°41'47"		



Task distance: 315.9mi

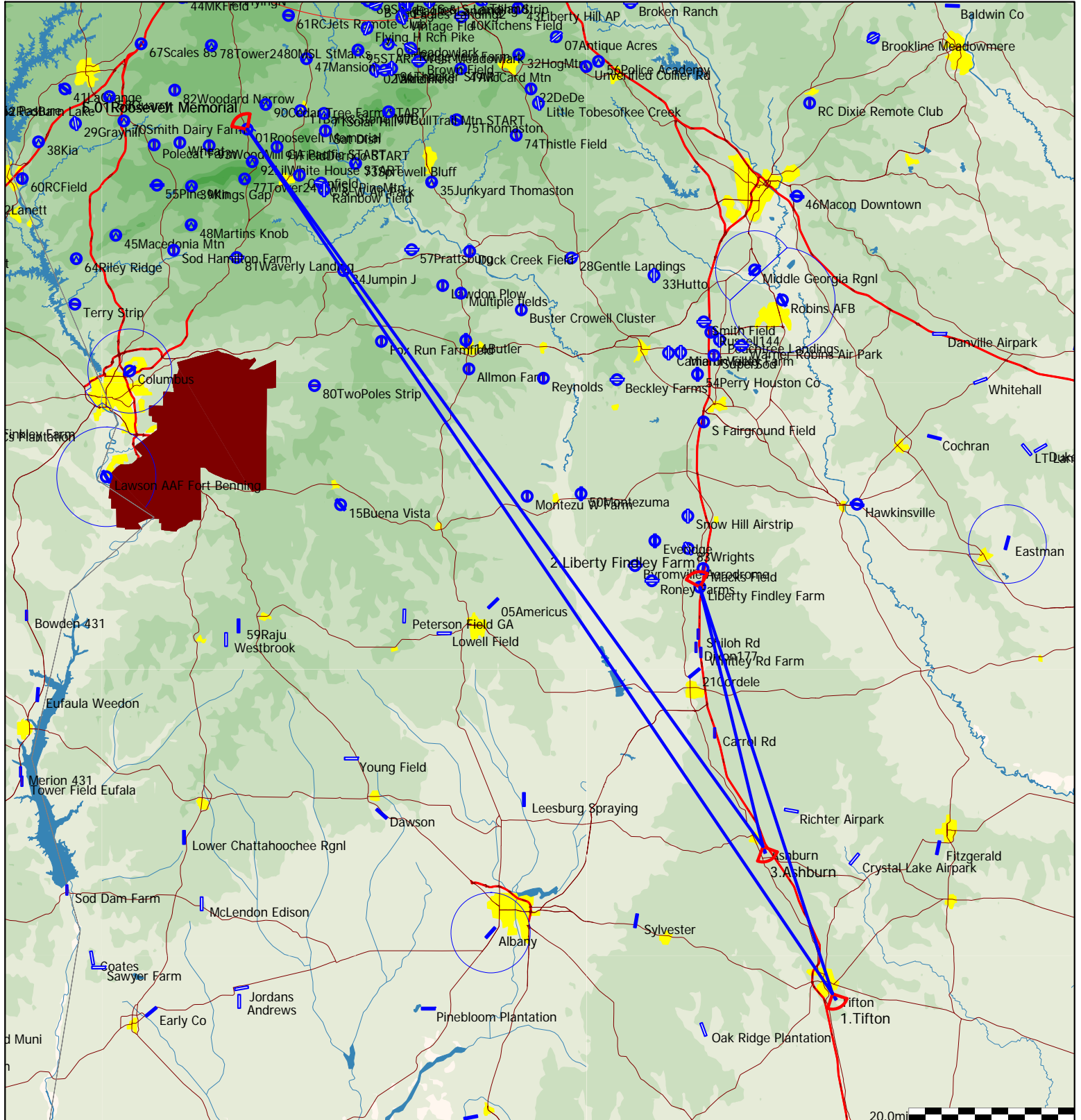
Style	Code	Points	Latitude	Longitude	Dis.	Crs.
Take off	01Rosevl	01Roosevelt Memorial	N32°56'19"	W084°41'47"		
Start	01Rosevl	01Roosevelt Memorial	N32°56'19"	W084°41'47"		
1.Point	52Murphy	52Murphys Landing	N33°15'31"	W084°50'41"	23.7mi	339°
2.Point	CrystLk	Crystal Lake Airpark	N31°39'51"	W083°26'38"	137.0mi	143°
3.Point	41LaGrng	41LaGrange	N33°00'32"	W085°04'21"	132.9mi	315°
Finish	01Rosevl	01Roosevelt Memorial	N32°56'19"	W084°41'47"	22.4mi	102°
Landing	01Rosevl	01Roosevelt Memorial	N32°56'19"	W084°41'47"		



Type: Polygon with three points [508.4pts]

Task distance: 315.9mi

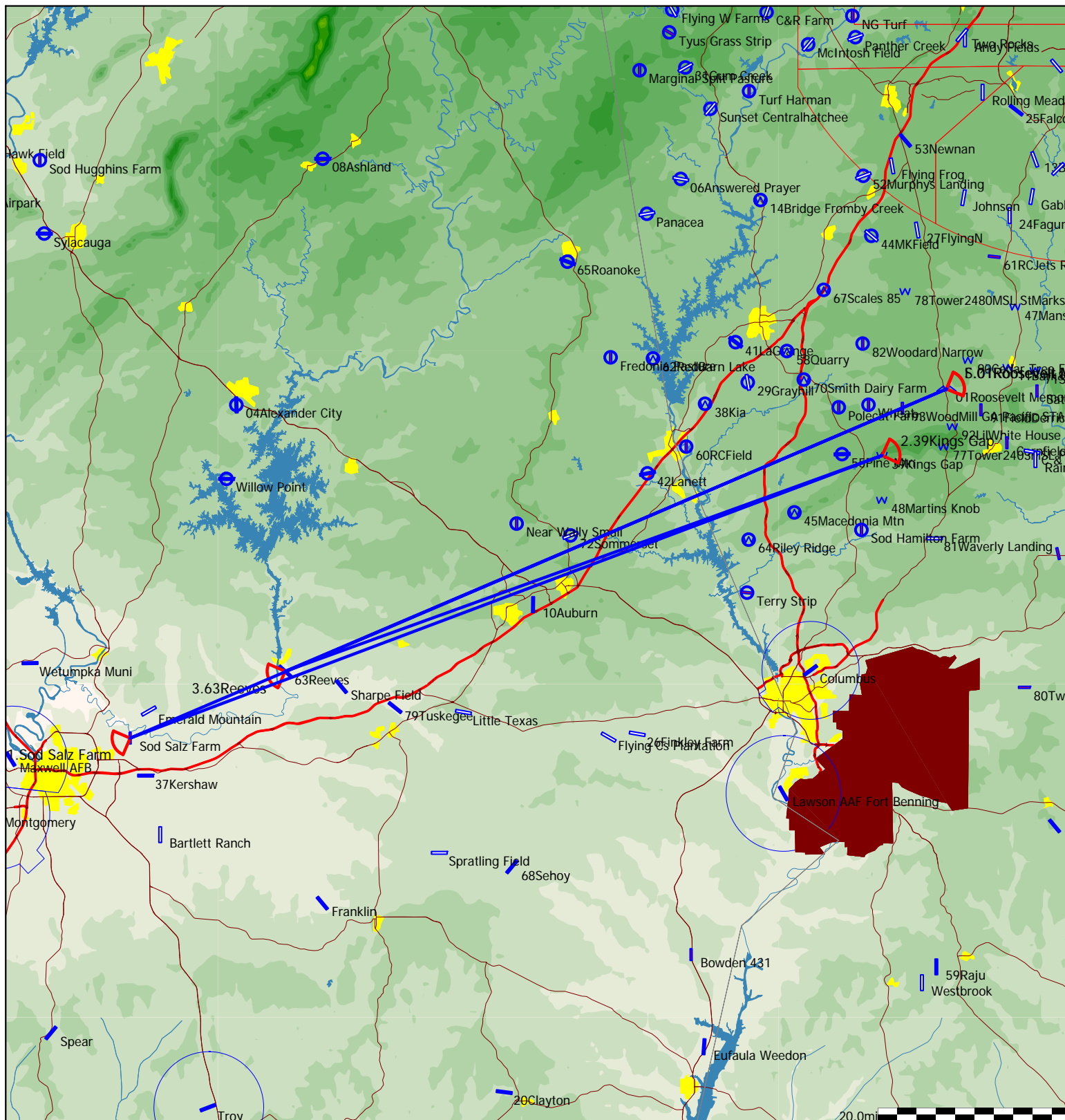
Style	Code	Points	Latitude	Longitude	Dis.	Crs.
Take off	01Rosevl	01Roosevelt Memorial	N32°56'19"	W084°41'47"		
Start	01Rosevl	01Roosevelt Memorial	N32°56'19"	W084°41'47"		
1.Point	Tifton	Tifton	N31°25'44"	W083°29'19"	125.8mi	145°
2.Point	LbrtFF	Liberty Findley Farm	N32°08'20"	W083°45'45"	51.5mi	342°
3.Point	Ashburn	Ashburn	N31°41'09"	W083°37'56"	32.1mi	166°
Finish	01Rosevl	01Roosevelt Memorial	N32°56'19"	W084°41'47"	106.4mi	324°
Landing	01Rosevl	01Roosevelt Memorial	N32°56'19"	W084°41'47"		



Type: Polygon with three points [509.1pts]

Task distance: 316.3mi

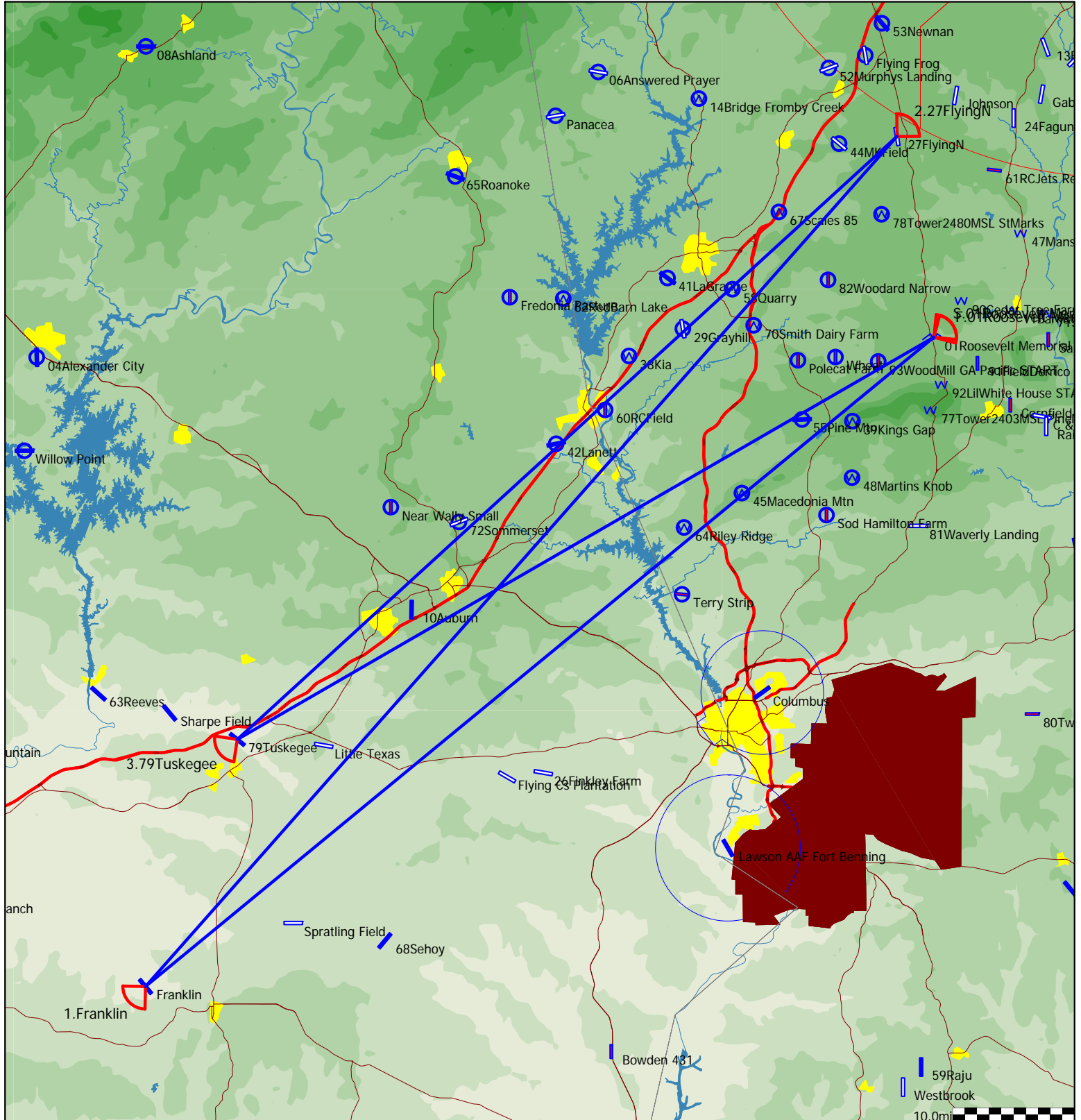
Style	Code	Points	Latitude	Longitude	Dis.	Crs.
Take off	01Rosevl	01Roosevelt Memorial	N32°56'19"	W084°41'47"		
Start	01Rosevl	01Roosevelt Memorial	N32°56'19"	W084°41'47"		
1.Point	SodSal	Sod Salz Farm	N32°24'53"	W086°09'09"	92.2mi	247°
2.Point	39KinGap	39Kings Gap	N32°50'20"	W084°48'41"	83.5mi	69°
3.Point	62Reves	63Reeves	N32°30'54"	W085°52'34"	65.9mi	251°
Finish	01Rosevl	01Roosevelt Memorial	N32°56'19"	W084°41'47"	74.7mi	67°
Landing	01Rosevl	01Roosevelt Memorial	N32°56'19"	W084°41'47"		



Type: Polygon with three points [509.4pts]

Task distance: 316.5mi

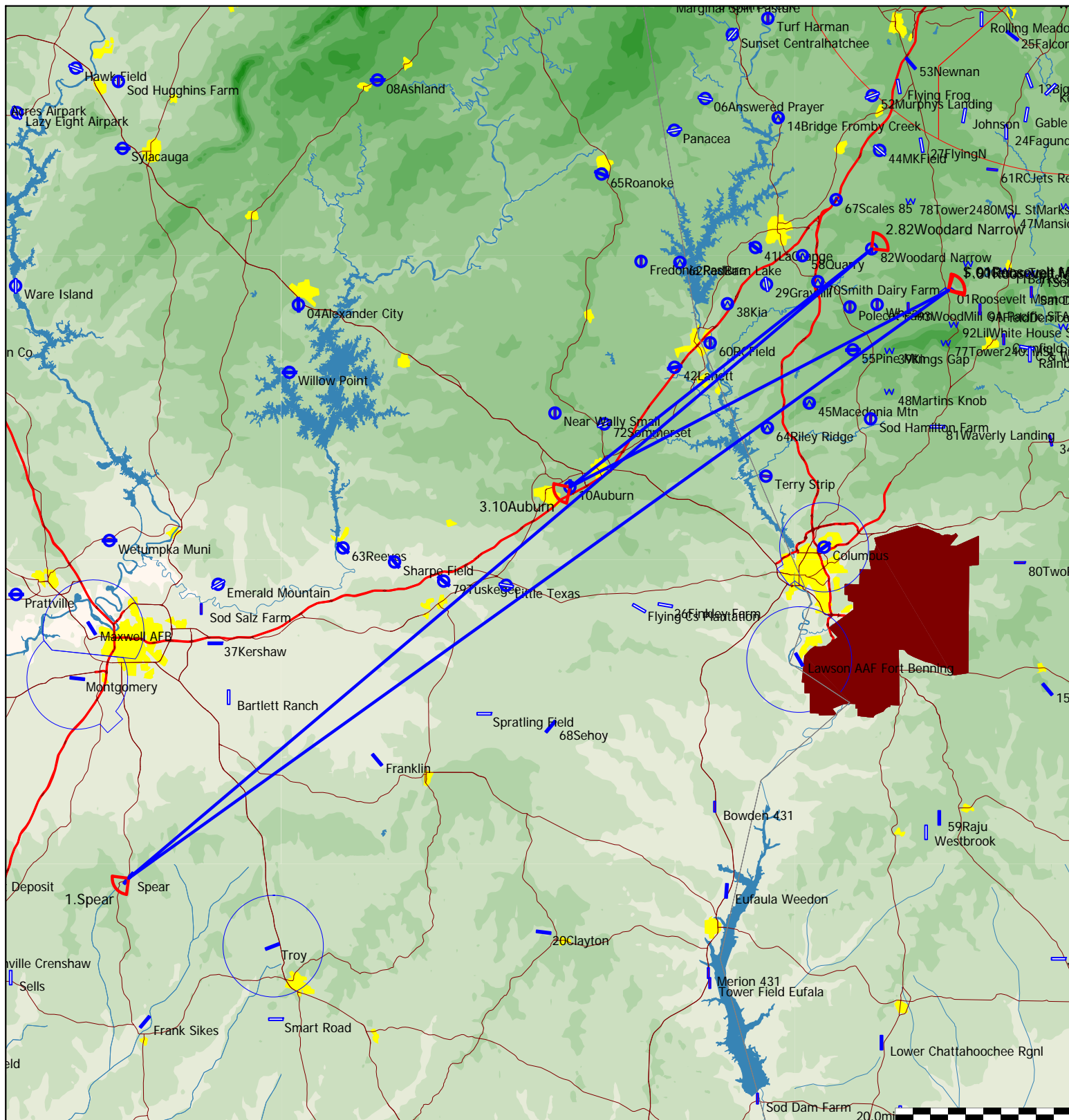
Style	Code	Points	Latitude	Longitude	Dis.	Crs.
Take off	01Rosevl	01Roosevelt Memorial	N32°56'19"	W084°41'47"		
Start	01Rosevl	01Roosevelt Memorial	N32°56'19"	W084°41'47"		
1.Point	Franklin	Franklin	N32°10'01"	W085°48'35"	84.0mi	231°
2.Point	27FlyngN	27FlyingN	N33°10'38"	W084°44'55"	93.1mi	41°
3.Point	79Tusgeg	79Tuskegee	N32°27'38"	W085°40'48"	73.3mi	228°
Finish	01Rosevl	01Roosevelt Memorial	N32°56'19"	W084°41'47"	66.1mi	60°
Landing	01Rosevl	01Roosevelt Memorial	N32°56'19"	W084°41'47"		



Type: Polygon with three points [510.5pts]

Task distance: 317.2mi

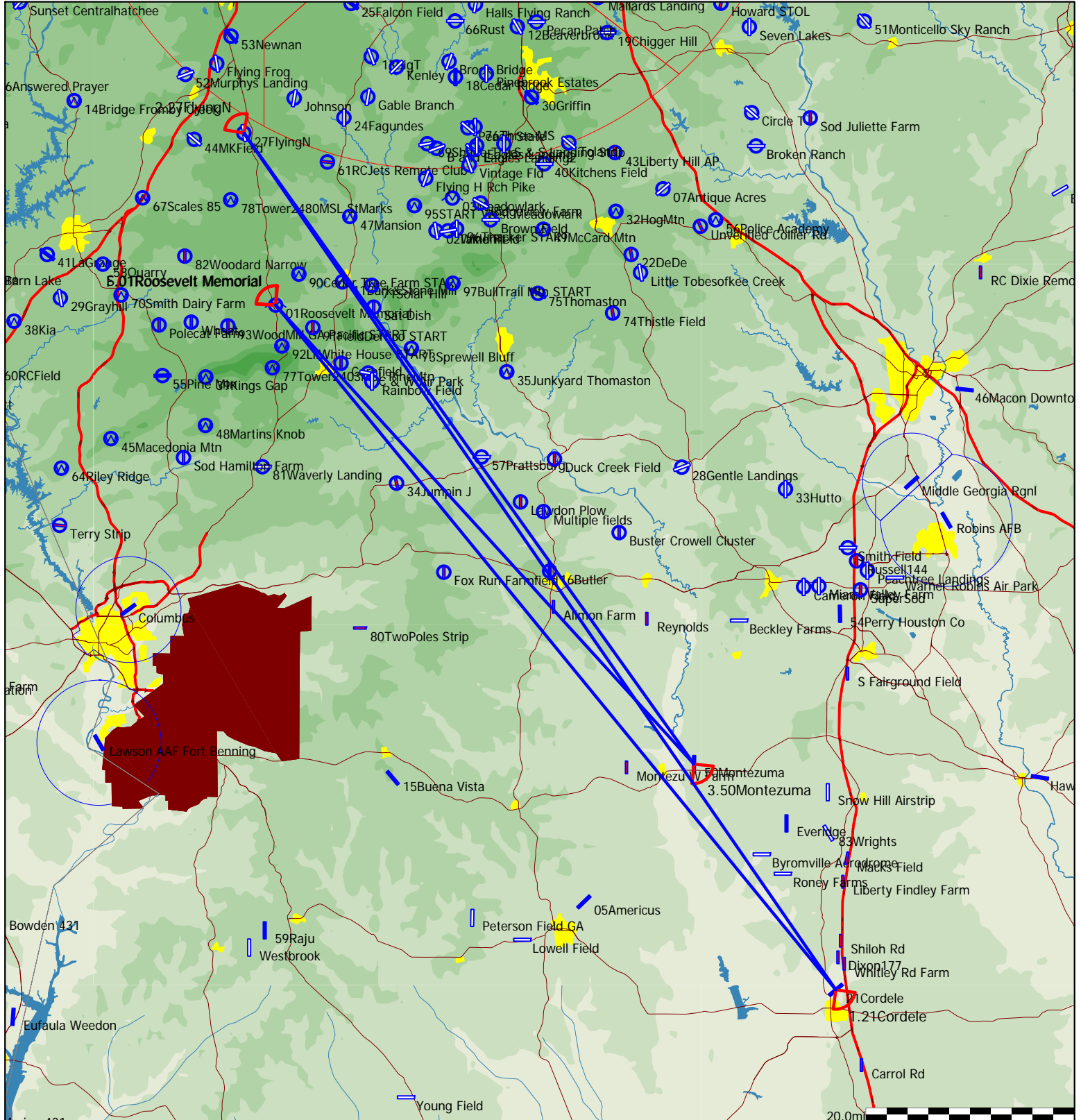
Style	Code	Points	Latitude	Longitude	Dis.	Crs.
Take off	01Rosevl	01Roosevelt Memorial	N32°56'19"	W084°41'47"		
Start	01Rosevl	01Roosevelt Memorial	N32°56'19"	W084°41'47"		
1.Point	Spear	Spear	N31°58'20"	W086°17'38"	114.6mi	235°
2.Point	82WodNar	82Woodard Narrow	N33°00'24"	W084°50'45"	110.6mi	49°
3.Point	10Auburn	10Auburn	N32°36'54"	W085°26'02"	43.6mi	232°
Finish	01Rosevl	01Roosevelt Memorial	N32°56'19"	W084°41'47"	48.4mi	62°
Landing	01Rosevl	01Roosevelt Memorial	N32°56'19"	W084°41'47"		



Type: Polygon with three points [512.Opts]

Task distance: 318.1mi

Style	Code	Points	Latitude	Longitude	Dis.	Crs.
Take off	01Rosevl	01Roosevelt Memorial	N32°56'19"	W084°41'47"		
Start	01Rosevl	01Roosevelt Memorial	N32°56'19"	W084°41'47"		
1.Point	21Cordel	21Cordele	N31°59'20"	W083°46'26"	84.8mi	140°
2.Point	27FlyngN	27FlyingN	N33°10'38"	W084°44'55"	99.7mi	325°
3.Point	50Montez	50Montezuma	N32°18'07"	W084°00'27"	74.2mi	144°
Finish	01Rosevl	01Roosevelt Memorial	N32°56'19"	W084°41'47"	59.5mi	318°
Landing	01Rosevl	01Roosevelt Memorial	N32°56'19"	W084°41'47"		

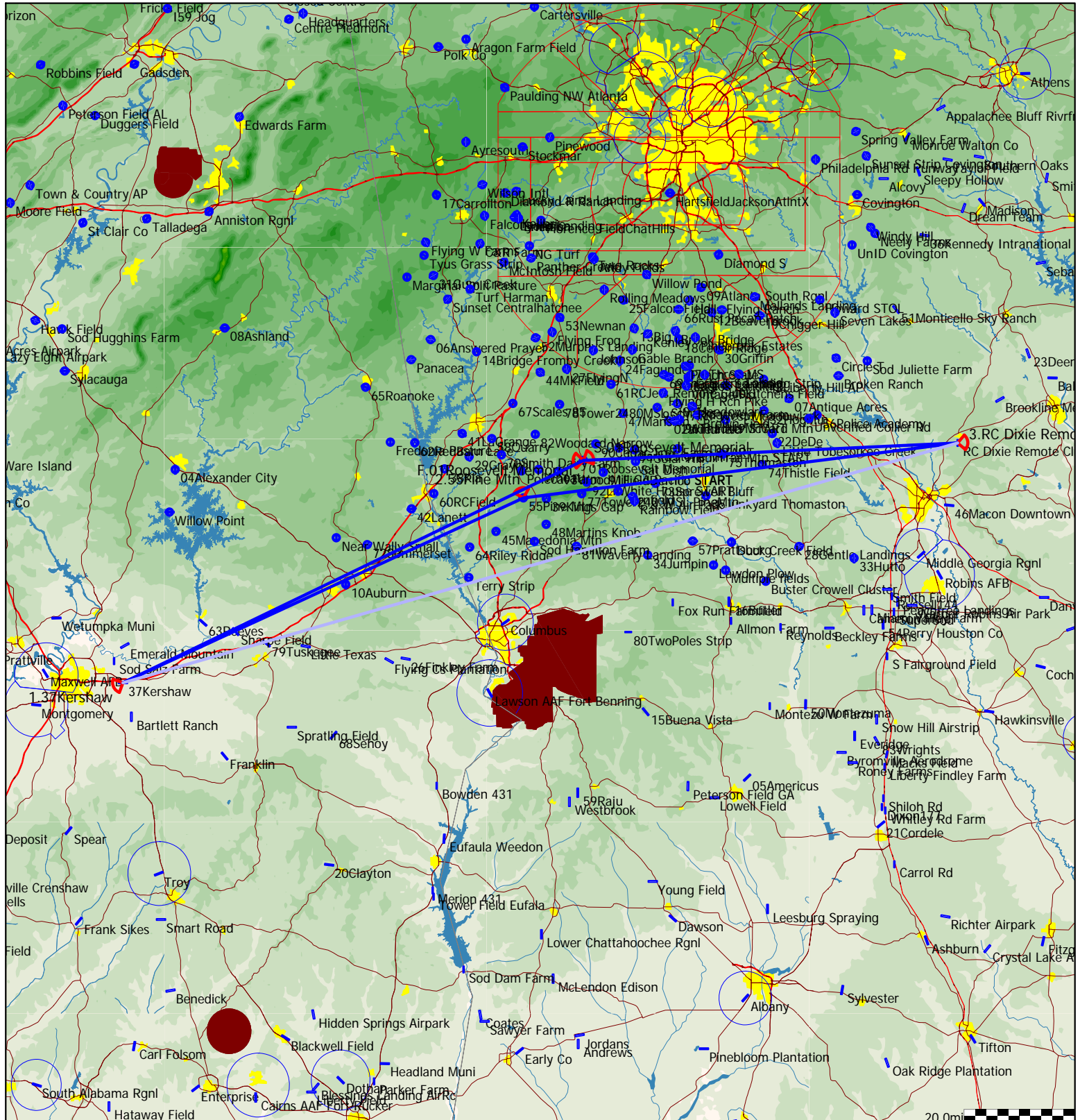


Polygon [512.6pts]

Polygon 512.6km

Task distance: 318.5mi

Style	Code	Points	Latitude	Longitude	Dis.	Crs.
Take off	01Rosevl	01Roosevelt Memorial	N32°56'19"	W084°41'47"		
Start	01Rosevl	01Roosevelt Memorial	N32°56'19"	W084°41'47"		
1.Point	37Kerhaw	37Kershaw	N32°21'30"	W086°07'30"	92.4mi	245°
2.Point	55PineMt	55Pine Mtn	N32°50'27"	W084°52'57"	79.7mi	65°
3.Point	RCDixie	RC Dixie Remote Club	N32°59'03"	W083°32'09"	78.9mi	82°
Finish	01Rosevl	01Roosevelt Memorial	N32°56'19"	W084°41'47"	67.5mi	268°
Landing	01Rosevl	01Roosevelt Memorial	N32°56'19"	W084°41'47"		

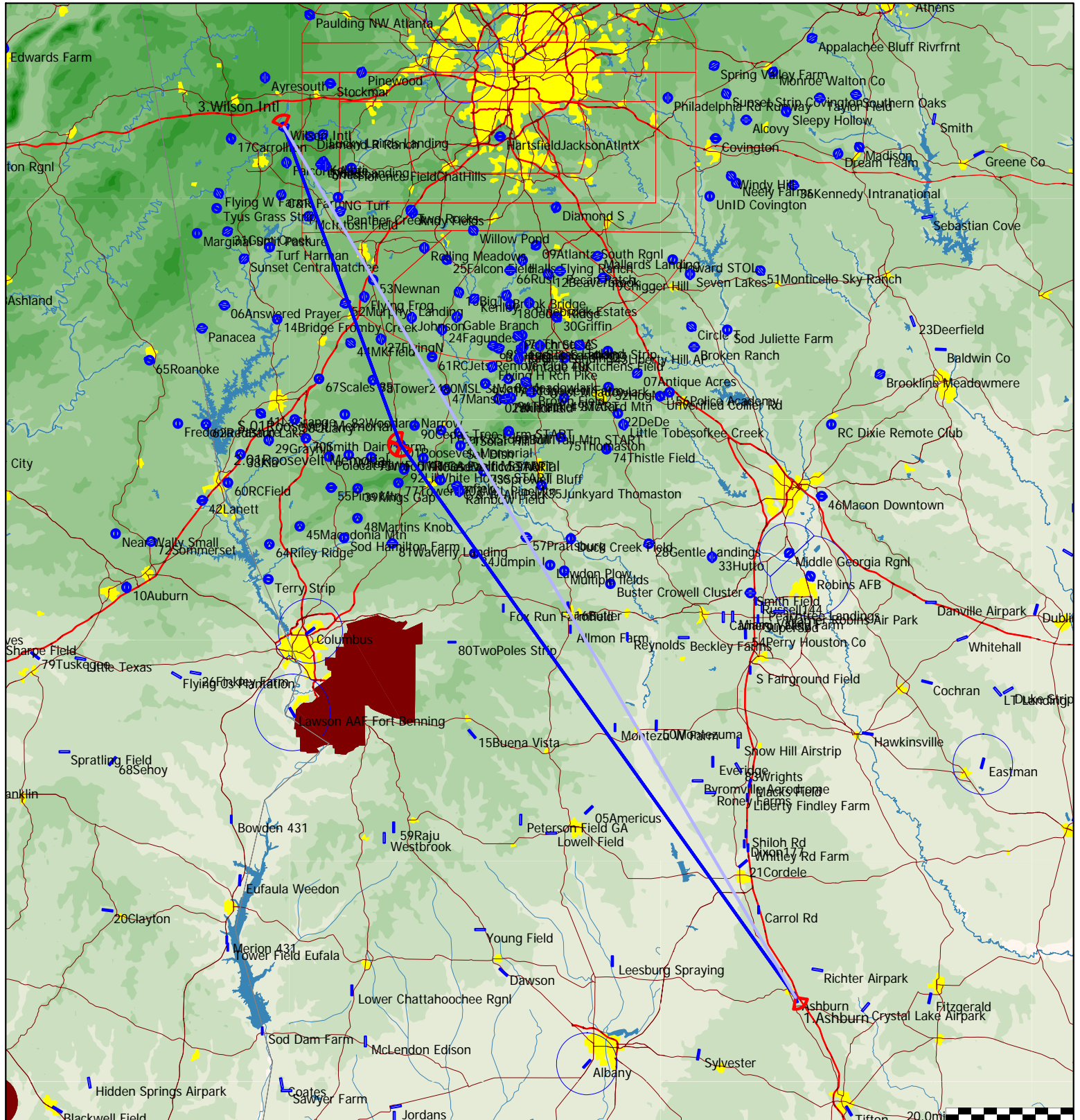


Polygon [512.6pts]

Task distance: 318.5mi

Polygon 3 turn point (back to back) 512.6km

Style	Code	Points	Latitude	Longitude	Dis.	Crs.
Take off	01Rosevl	01Roosevelt Memorial	N32°56'19"	W084°41'47"		
Start	01Rosevl	01Roosevelt Memorial	N32°56'19"	W084°41'47"		
1.Point	Ashburn	Ashburn	N31°41'09"	W083°37'56"	106.4mi	144°
2.Point	01Rosevl	01Roosevelt Memorial	N32°56'19"	W084°41'47"	106.4mi	324°
3.Point	Wilsnl	Wilson Intl	N33°39'30"	W085°00'36"	52.8mi	340°
Finish	01Rosevl	01Roosevelt Memorial	N32°56'19"	W084°41'47"	52.8mi	160°
Landing	01Rosevl	01Roosevelt Memorial	N32°56'19"	W084°41'47"		

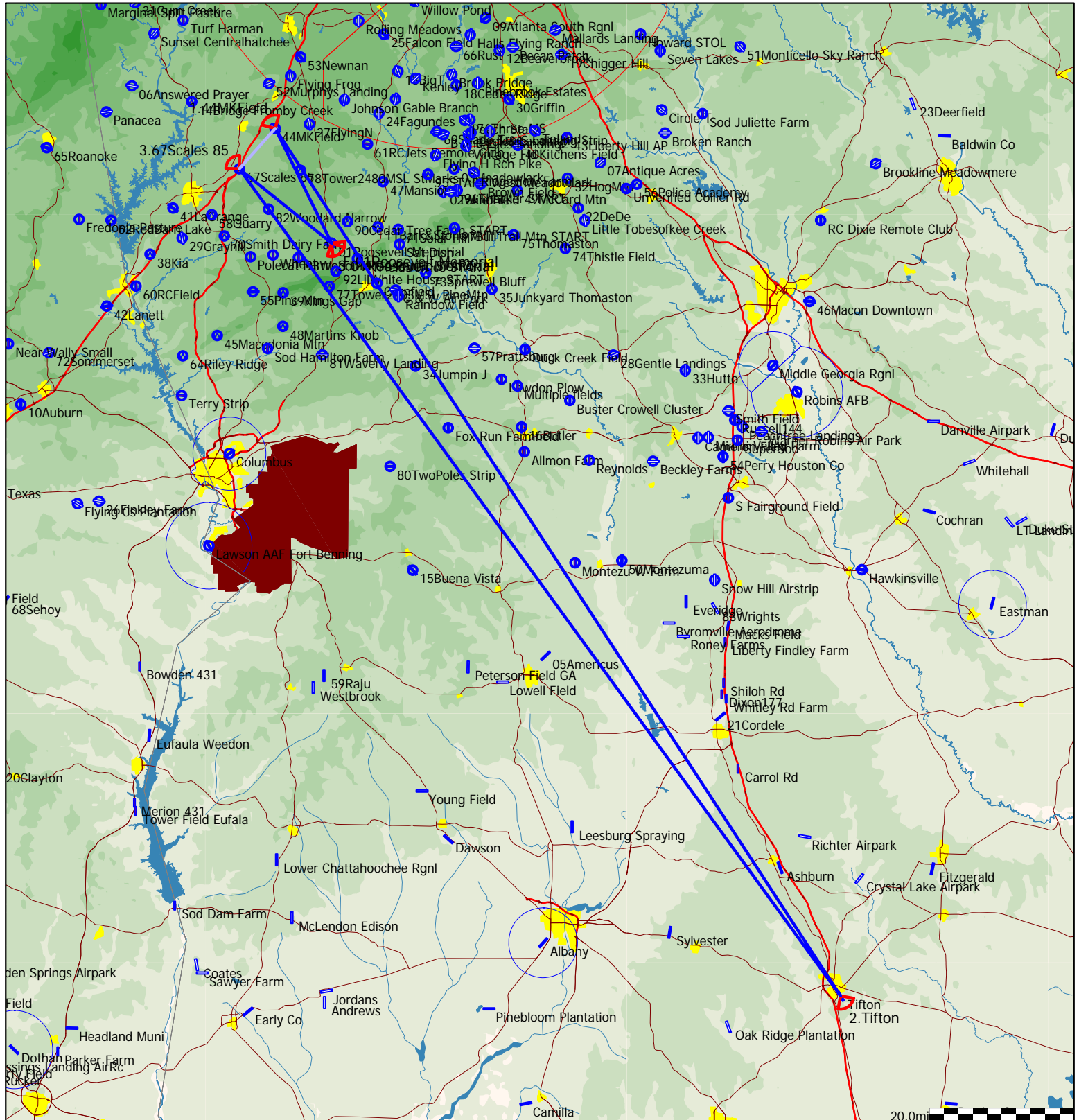


Polygon [513.1pts]

Polygon 513.1km

Task distance: 318.8mi

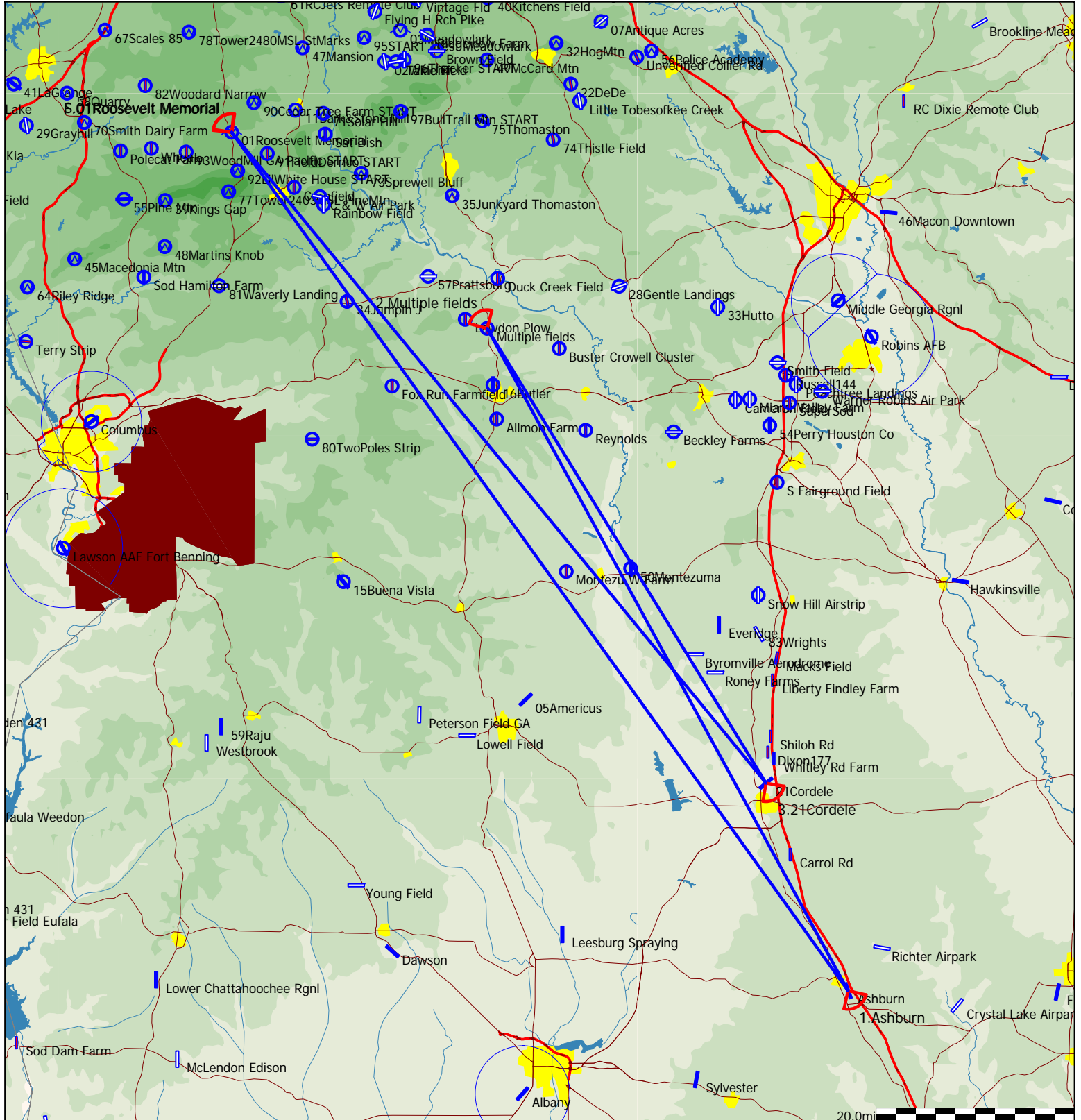
Style	Code	Points	Latitude	Longitude	Dis.	Crs.
Take off	01Rosevl	01Roosevelt Memorial	N32°56'19"	W084°41'47"		
Start	01Rosevl	01Roosevelt Memorial	N32°56'19"	W084°41'47"		
1.Point	44MKFeld	44MKField	N33°10'07"	W084°49'49"	17.7mi	334°
2.Point	Tifton	Tifton	N31°25'44"	W083°29'19"	143.3mi	146°
3.Point	67Scales	67Scales 85	N33°05'15"	W084°54'55"	141.6mi	324°
Finish	01Rosevl	01Roosevelt Memorial	N32°56'19"	W084°41'47"	16.3mi	129°
Landing	01Rosevl	01Roosevelt Memorial	N32°56'19"	W084°41'47"		



Type: Polygon with three points [516.3pts]

Task distance: 320.8mi

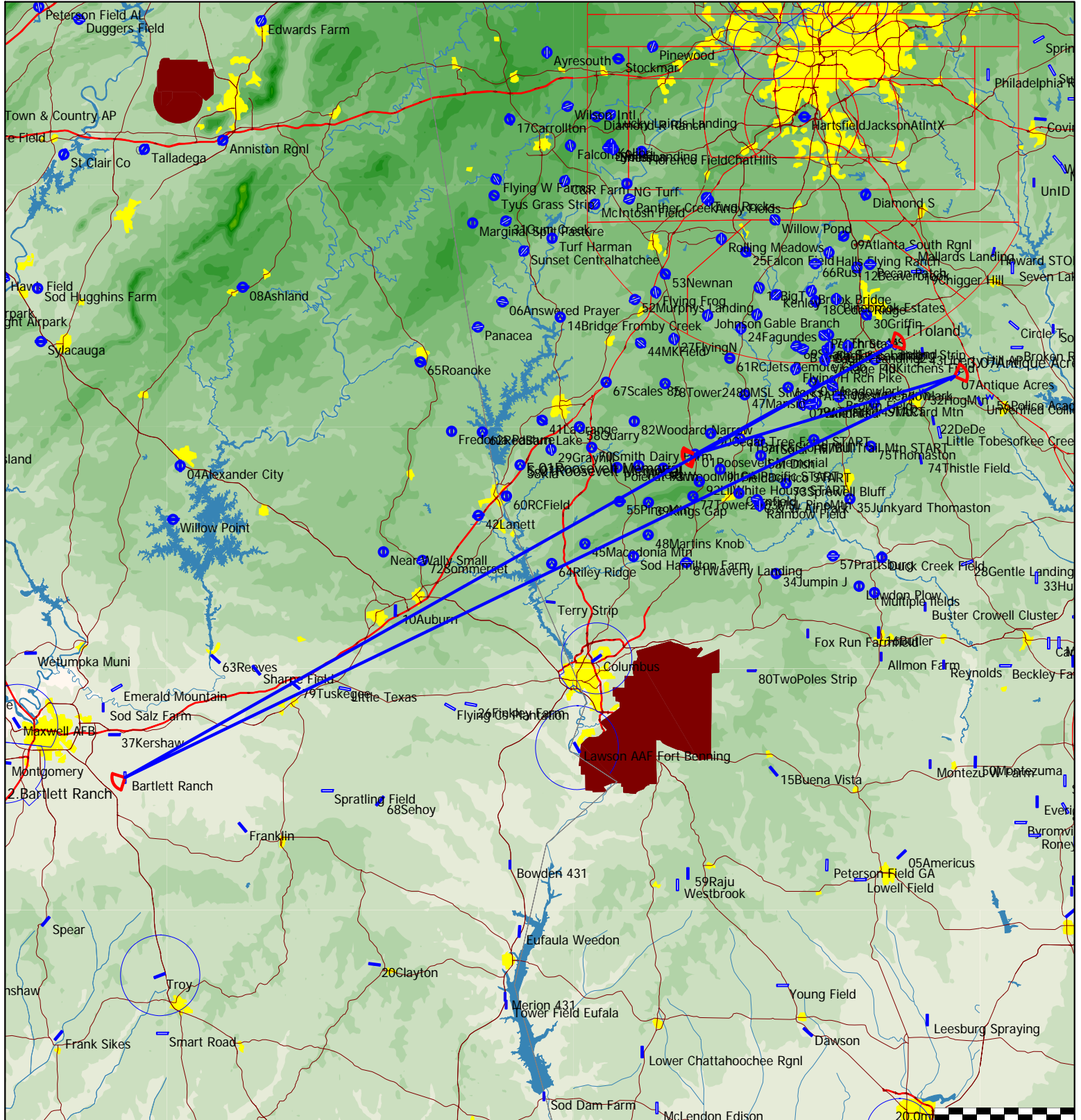
Style	Code	Points	Latitude	Longitude	Dis.	Crs.
Take off	01Rosevl	01Roosevelt Memorial	N32°56'19"	W084°41'47"		
Start	01Rosevl	01Roosevelt Memorial	N32°56'19"	W084°41'47"		
1.Point	Ashburn	Ashburn	N31°41'09"	W083°37'56"	106.4mi	144°
2.Point	MultiFld	Multiple fields	N32°39'08"	W084°15'19"	75.9mi	331°
3.Point	21Cordel	21Cordele	N31°59'20"	W083°46'26"	53.7mi	148°
Finish	01Rosevl	01Roosevelt Memorial	N32°56'19"	W084°41'47"	84.8mi	321°
Landing	01Rosevl	01Roosevelt Memorial	N32°56'19"	W084°41'47"		



Type: Polygon with three points [528.8pts]

Task distance: 328.6mi

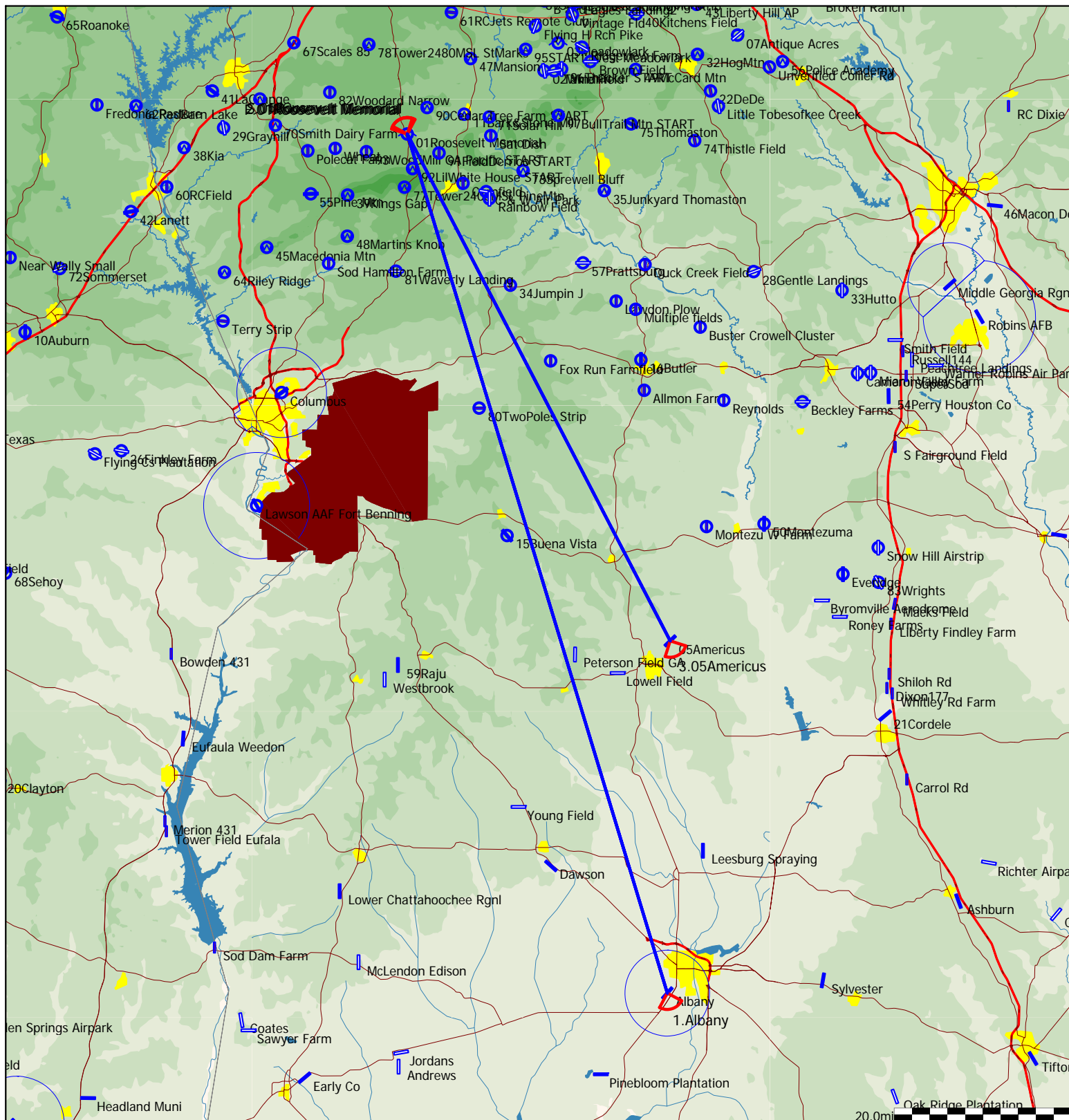
Style	Code	Points	Latitude	Longitude	Dis.	Crs.
Take off	01Rosevl	01Roosevelt Memorial	N32°56'19"	W084°41'47"		
Start	01Rosevl	01Roosevelt Memorial	N32°56'19"	W084°41'47"		
1.Point	Toland	Toland	N33°09'50"	W084°12'49"	32.0mi	61°
2.Point	Bartlett	Bartlett Ranch	N32°16'11"	W086°05'56"	125.9mi	241°
3.Point	07Antiqu	07Antique Acres	N33°06'00"	W084°03'31"	131.9mi	64°
Finish	01Rosevl	01Roosevelt Memorial	N32°56'19"	W084°41'47"	38.7mi	253°
Landing	01Rosevl	01Roosevelt Memorial	N32°56'19"	W084°41'47"		



Type: Polygon with three points [532.1pts]

Task distance: 330.6mi

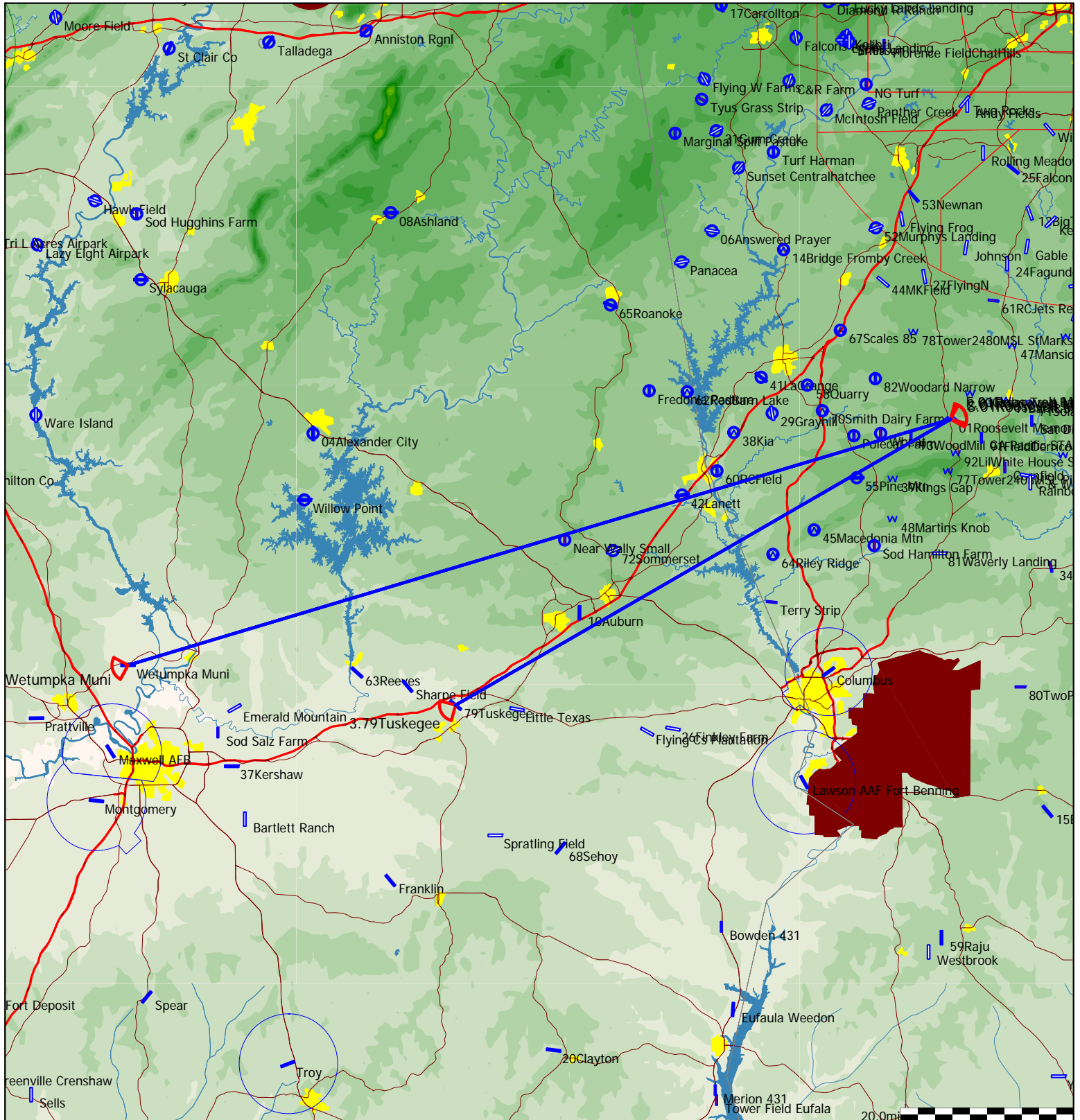
Style	Code	Points	Latitude	Longitude	Dis.	Crs.
Take off	01Rosevl	01Roosevelt Memorial	N32°56'19"	W084°41'47"		
Start	01Rosevl	01Roosevelt Memorial	N32°56'19"	W084°41'47"		
1.Point	Albany	Albany	N31°32'08"	W084°11'40"	101.0mi	163°
2.Point	01Rosevl	01Roosevelt Memorial	N32°56'19"	W084°41'47"	101.0mi	343°
3.Point	05Amercs	05Americus	N32°06'39"	W084°11'20"	64.3mi	152°
Finish	01Rosevl	01Roosevelt Memorial	N32°56'19"	W084°41'47"	64.3mi	333°
Landing	01Rosevl	01Roosevelt Memorial	N32°56'19"	W084°41'47"		



Type: Polygon with three points [532.5pts]

Task distance: 330.9mi

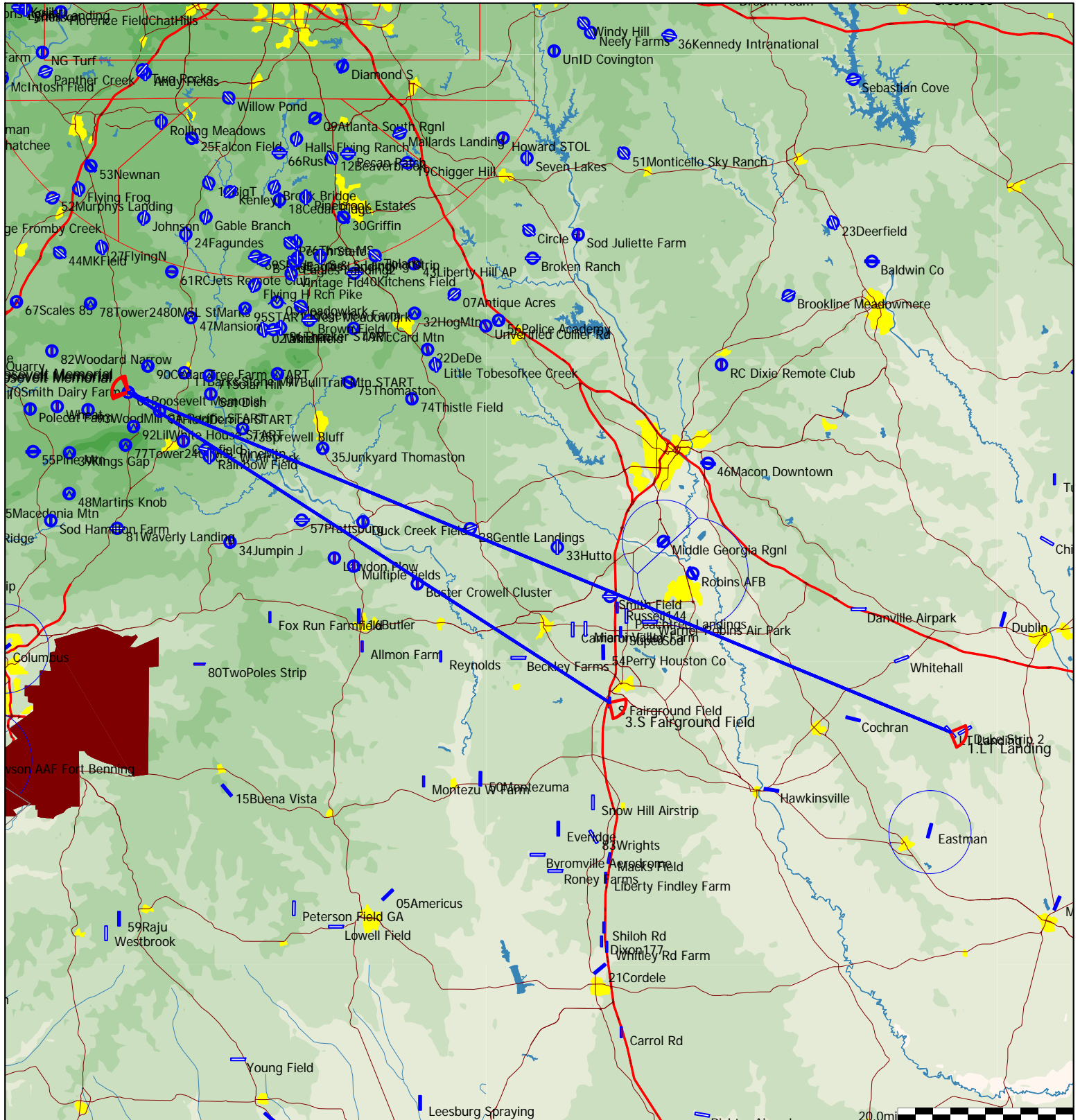
Style	Code	Points	Latitude	Longitude	Dis.	Crs.
Take off	01Rosevl	01Roosevelt Memorial	N32°56'19"	W084°41'47"		
Start	01Rosevl	01Roosevelt Memorial	N32°56'19"	W084°41'47"		
1.Point	Wetumpka	Wetumpka Muni	N32°31'38"	W086°19'52"	99.3mi	254°
2.Point	01Rosevl	01Roosevelt Memorial	N32°56'19"	W084°41'47"	99.3mi	73°
3.Point	79Tusgeg	79Tuskegee	N32°27'38"	W085°40'48"	66.1mi	240°
Finish	01Rosevl	01Roosevelt Memorial	N32°56'19"	W084°41'47"	66.1mi	60°
Landing	01Rosevl	01Roosevelt Memorial	N32°56'19"	W084°41'47"		



Type: Polygon with three points [536.2pts]

Task distance: 333.2mi

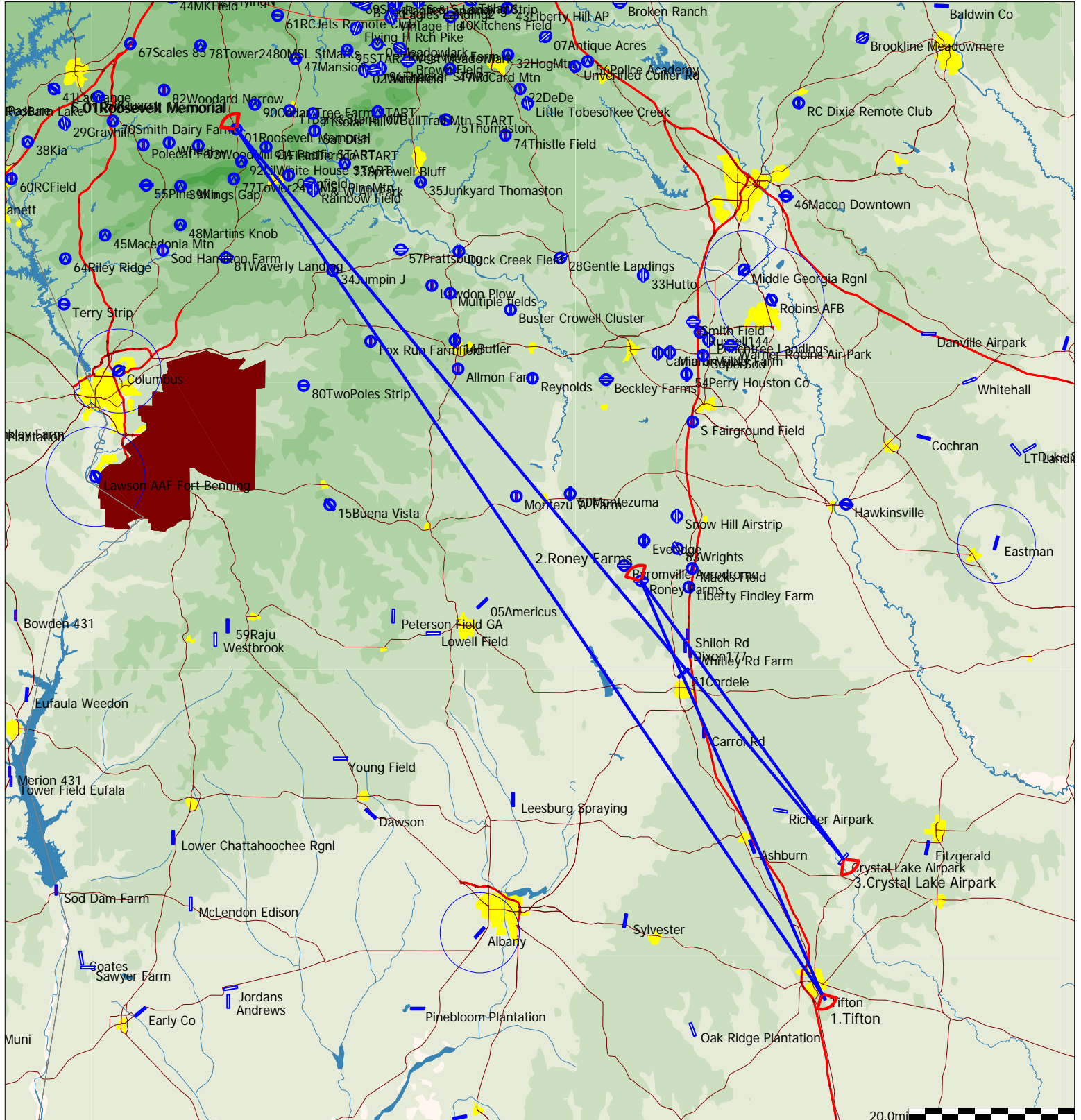
Style	Code	Points	Latitude	Longitude	Dis.	Crs.
Take off	01Rosevl	01Roosevelt Memorial	N32°56'19"	W084°41'47"		
Start	01Rosevl	01Roosevelt Memorial	N32°56'19"	W084°41'47"		
1.Point	LT Land	LT Landing	N32°22'44"	W083°05'17"	101.4mi	112°
2.Point	01Rosevl	01Roosevelt Memorial	N32°56'19"	W084°41'47"	101.4mi	293°
3.Point	SoFairFl	S Fairground Field	N32°25'39"	W083°45'17"	65.2mi	122°
Finish	01Rosevl	01Roosevelt Memorial	N32°56'19"	W084°41'47"	65.2mi	303°
Landing	01Rosevl	01Roosevelt Memorial	N32°56'19"	W084°41'47"		



Type: Polygon with three points [540.8pts]

Task distance: 336.0mi

Style	Code	Points	Latitude	Longitude	Dis.	Crs.
Take off	01Rosevl	01Roosevelt Memorial	N32°56'19"	W084°41'47"		
Start	01Rosevl	01Roosevelt Memorial	N32°56'19"	W084°41'47"		
1.Point	Tifton	Tifton	N31°25'44"	W083°29'19"	125.8mi	145°
2.Point	Roney	Roney Farms	N32°09'00"	W083°51'41"	54.3mi	336°
3.Point	CrystLk	Crystal Lake Airpark	N31°39'51"	W083°26'38"	41.5mi	144°
Finish	01Rosevl	01Roosevelt Memorial	N32°56'19"	W084°41'47"	114.4mi	320°
Landing	01Rosevl	01Roosevelt Memorial	N32°56'19"	W084°41'47"		



Type: Polygon with three points [545.7pts]

Task distance: 339.1mi

Style	Code	Points	Latitude	Longitude	Dis.	Crs.
Take off	01Rosevl	01Roosevelt Memorial	N32°56'19"	W084°41'47"		
Start	01Rosevl	01Roosevelt Memorial	N32°56'19"	W084°41'47"		
1.Point	Dawson	Dawson Field	N34°10'04"	W085°15'31"	90.7mi	339°
2.Point	01Rosevl	01Roosevelt Memorial	N32°56'19"	W084°41'47"	90.7mi	159°
3.Point	Polk	Polk Co	N34°01'07"	W085°08'47"	78.8mi	341°
Finish	01Rosevl	01Roosevelt Memorial	N32°56'19"	W084°41'47"	78.8mi	161°
Landing	01Rosevl	01Roosevelt Memorial	N32°56'19"	W084°41'47"		

